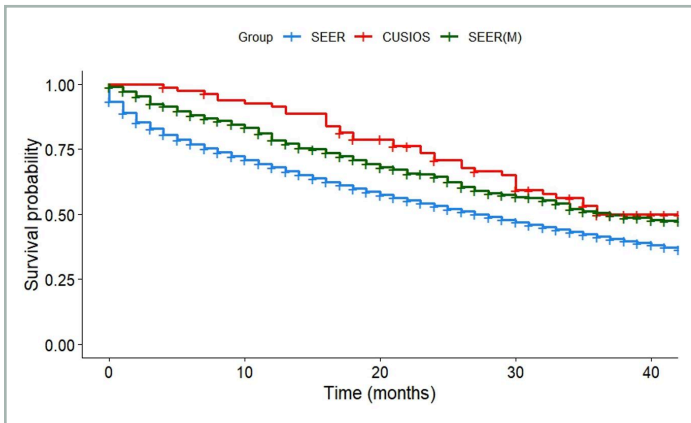
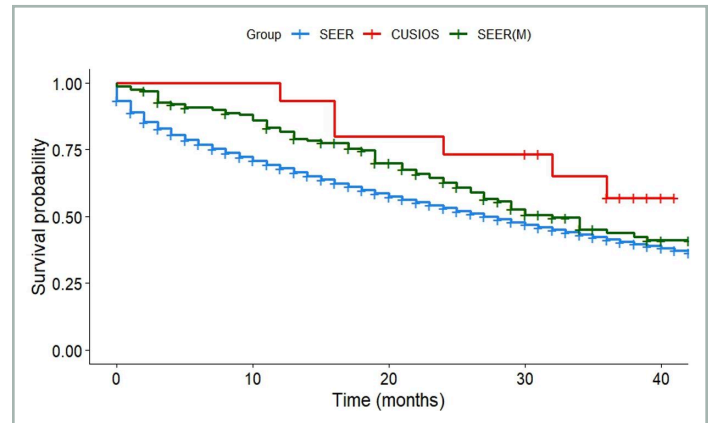


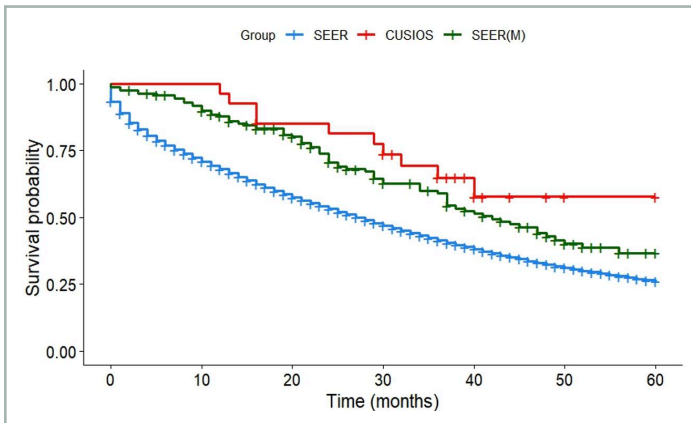
## APPENDIX A: SEER SURVIVAL COMPARISON



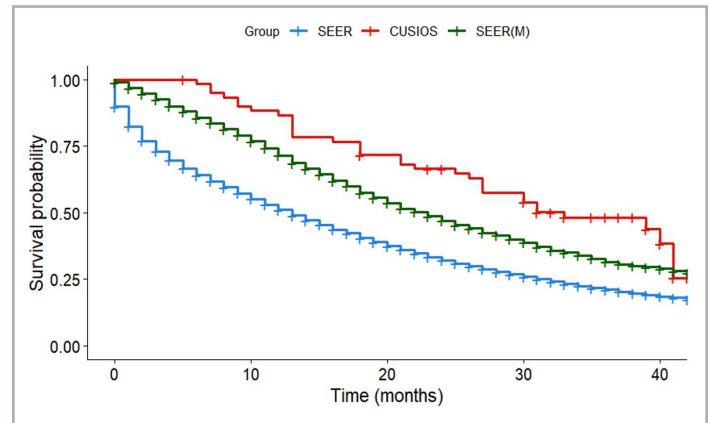
**FIGURE A1** Breast cancer: survival of participants with lag time  $\leq 6$  months compared with SEER registry. SEER: All patients from SEER with Stage IV breast cancer ( $N = 35,551$ ). SEER(M): Patients from SEER who matched with at least one study participant ( $N = 902$ ). CUSIOS: Study population ( $N = 82$ ). This curve was created as a graphic representation to aid viewers in visualizing the data. Statistical analyses were only applied to the main bootstrapped analysis. SEER: Surveillance Epidemiology and End Results (registry data); CUSIOS: Canadian/US Integrative Oncology Study (study population).



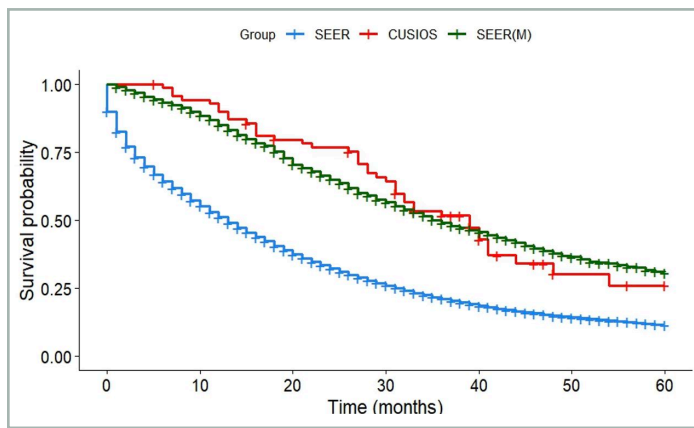
**FIGURE A3** Breast cancer: survival of participants with *de novo* disease and lag time  $\leq 6$  months compared with SEER registry. SEER: All patients from SEER with Stage IV breast cancer ( $N = 35,551$ ). SEER(M): Patients from SEER who matched with at least one study participant ( $N = 165$ ). CUSIOS: Study population ( $N = 15$ ). This curve was created as a graphic representation to aid viewers in visualizing the data. Statistical analyses were only applied to the main bootstrapped analysis. SEER: Surveillance Epidemiology and End Results (registry data); CUSIOS: Canadian/US Integrative Oncology Study (study population).



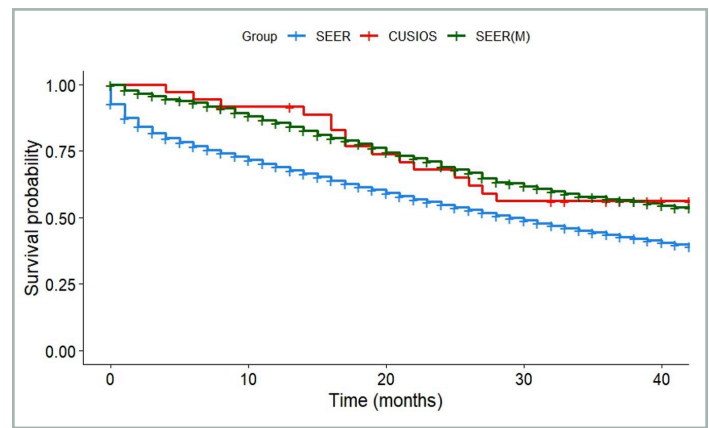
**FIGURE A2** Breast cancer: survival of participants with *de novo* disease compared with SEER registry. SEER: All patients from SEER with Stage IV breast cancer ( $N = 35,551$ ). SEER(M): Patients from SEER who matched with at least one study participant ( $N = 162$ ). CUSIOS: Study population ( $N = 27$ ). This curve was created as a graphic representation to aid viewers in visualizing the data. Statistical analyses were only applied to the main bootstrapped analysis. SEER: Surveillance Epidemiology and End Results (registry data); CUSIOS: Canadian/US Integrative Oncology Study (study population).



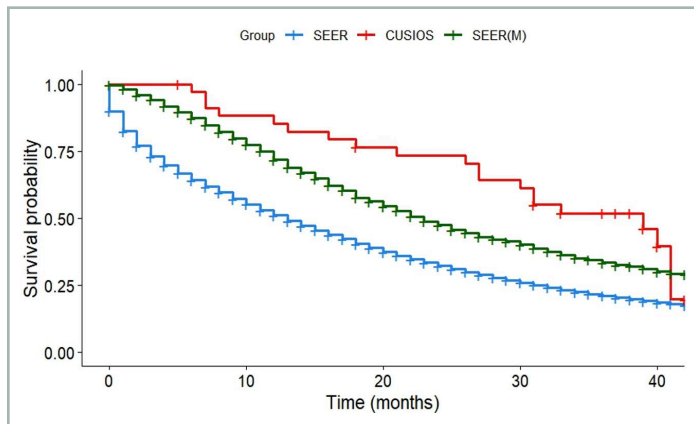
**FIGURE A4** Colorectal cancer: survival of participants with lag time  $\leq 6$  months compared with SEER registry. SEER: All patients from SEER with Stage IV colorectal cancer ( $N = 71,735$ ). SEER(M): Patients from SEER who matched with at least one study participant ( $N = 6,466$ ). CUSIOS: Study population ( $N = 61$ ). This curve was created as a graphic representation to aid viewers in visualizing the data. Statistical analyses were only applied to the main bootstrapped analysis. SEER: Surveillance Epidemiology and End Results (registry data); CUSIOS: Canadian/US Integrative Oncology Study (study population).



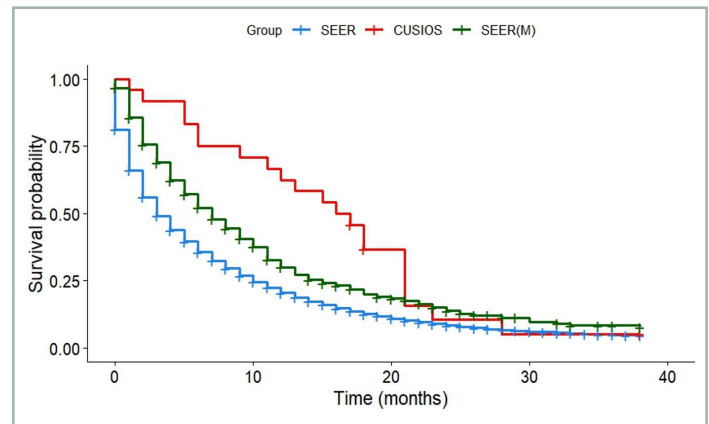
**FIGURE A5** Colorectal cancer: survival of participants with *de novo* disease compared with SEER registry. SEER: All patients from SEER with Stage IV colorectal cancer ( $N = 71,735$ ). SEER(M): Patients from SEER who matched with at least one study participant ( $N = 3,640$ ). CUSIOS: Study population ( $N = 70$ ). This curve was created as a graphic representation to aid viewers in visualizing the data. Statistical analyses were only applied to the main bootstrapped analysis. SEER: Surveillance Epidemiology and End Results (registry data); CUSIOS: Canadian/US Integrative Oncology Study (study population).



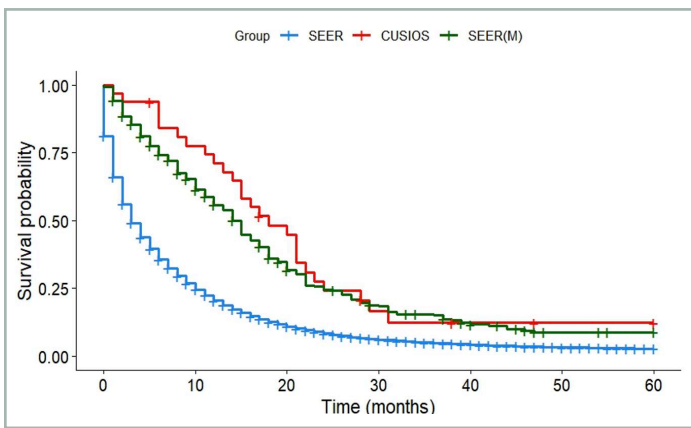
**FIGURE A7** Ovarian cancer: survival of participants with lag time  $\leq 8$  months compared with SEER registry. SEER: All patients from SEER with Stage III or IV ovarian cancer ( $N = 32,847$ ). SEER(M): Patients from SEER who matched with at least one study participant ( $N = 1,476$ ). CUSIOS: Study population ( $N = 36$ ). This curve was created as a graphic representation to aid viewers in visualizing the data. Statistical analyses were only applied to the main bootstrapped analysis. SEER: Surveillance Epidemiology and End Results (registry data); CUSIOS: Canadian/US Integrative Oncology Study (study population).



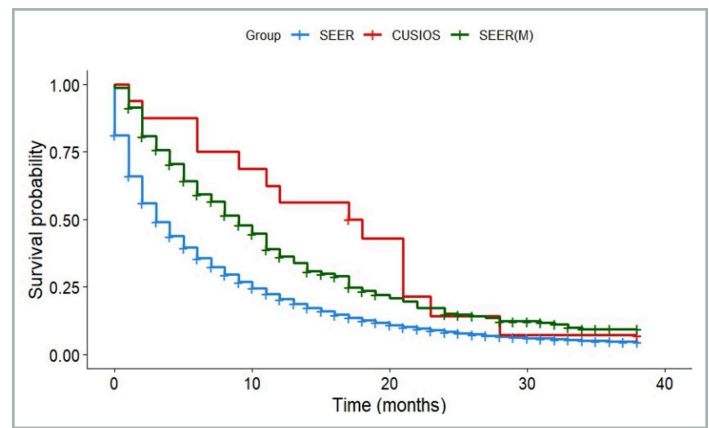
**FIGURE A6** Colorectal cancer: survival of participants with *de novo* disease and lag time  $\leq 6$  months compared with SEER registry. SEER: All patients from SEER with Stage IV colorectal cancer ( $N = 71,735$ ). SEER(M): Patients from SEER who matched with at least one study participant ( $N = 3,710$ ). CUSIOS: Study population ( $N = 35$ ). This curve was created as a graphic representation to aid viewers in visualizing the data. Statistical analyses were only applied to the main bootstrapped analysis. SEER: Surveillance Epidemiology and End Results (registry data); CUSIOS: Canadian/US Integrative Oncology Study (study population).



**FIGURE A8** Pancreatic cancer: survival of participants with lag time  $\leq 2$  months compared with SEER registry. SEER: All patients from SEER with stage III or IV pancreatic cancer ( $N = 65,851$ ). SEER(M): Patients from SEER who matched with at least one study participant ( $N = 624$ ). CUSIOS: Study population ( $N = 24$ ). This curve was created as a graphic representation to aid viewers in visualizing the data. Statistical analyses were only applied to the main bootstrapped analysis. SEER: Surveillance Epidemiology and End Results (registry data); CUSIOS: Canadian/US Integrative Oncology Study (study population).



**FIGURE A9** Pancreatic cancer: survival of participants with *de novo* disease compared with SEER registry. SEER: All patients from SEER with stage III or IV pancreatic cancer ( $N = 65,851$ ). SEER(M): Patients from SEER who matched with at least one study participant ( $N = 384$ ). CUSIOS: Study population ( $N = 32$ ). This curve was created as a graphic representation to aid viewers in visualizing the data. Statistical analyses were only applied to the main bootstrapped analysis. SEER: Surveillance Epidemiology and End Results (registry data); CUSIOS: Canadian/US Integrative Oncology Study (study population).



**FIGURE A10** Pancreatic cancer: survival of participants with *de novo* disease and lag time  $\leq 2$  months compared with SEER registry. SEER: All patients from SEER with stage III or IV pancreatic cancer ( $N = 65,851$ ). SEER(M): Patients from SEER who matched with at least one study participant ( $N = 416$ ). CUSIOS: Study population ( $N = 16$ ). This curve was created as a graphic representation to aid viewers in visualizing the data. Statistical analyses were only applied to the main bootstrapped analysis. SEER: Surveillance Epidemiology and End Results (registry data); CUSIOS: Canadian/US Integrative Oncology Study (study population).